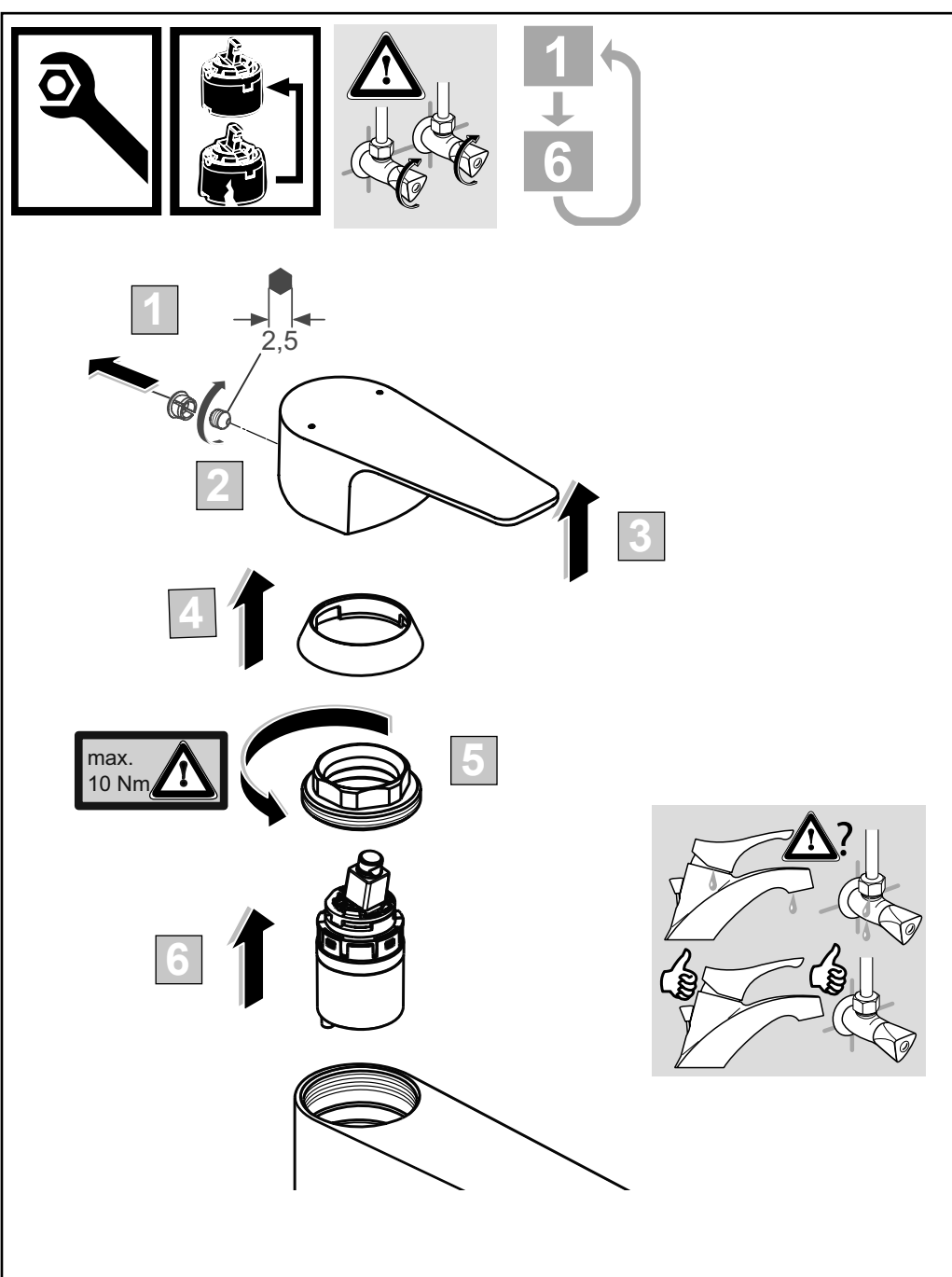
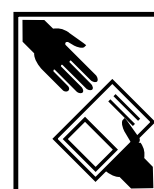
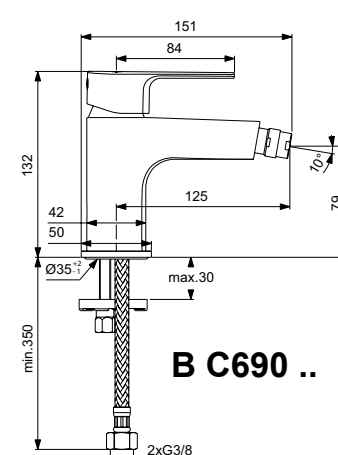
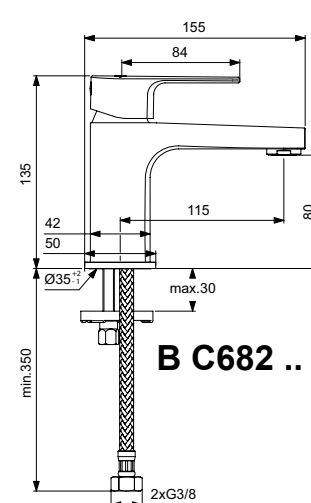


1 - B 961652 XX
2 - B 964696 NU
3 - A 861080 XX
4 - B 961645 NU
5 - A 861397 NU
6 - B 961383 XX
7 - B 961290 XX

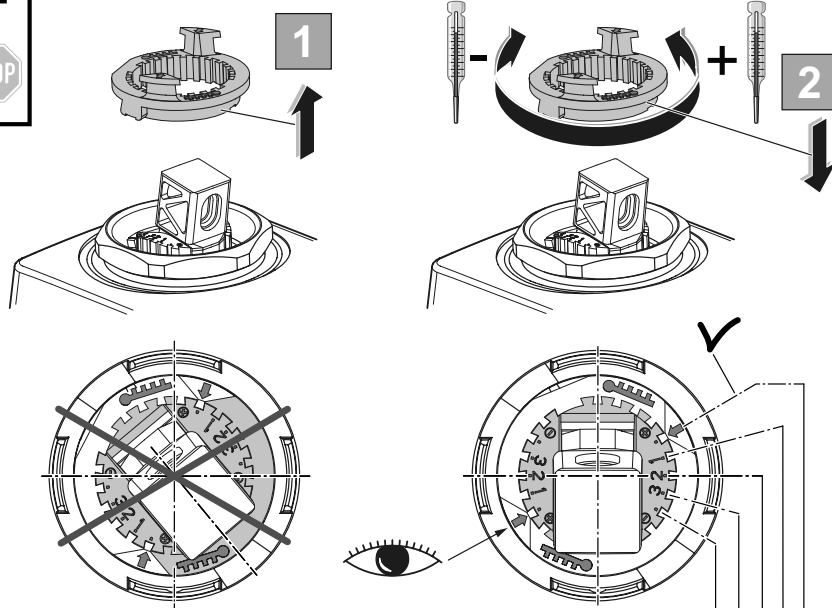
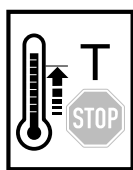
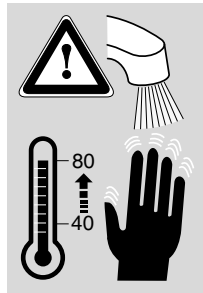
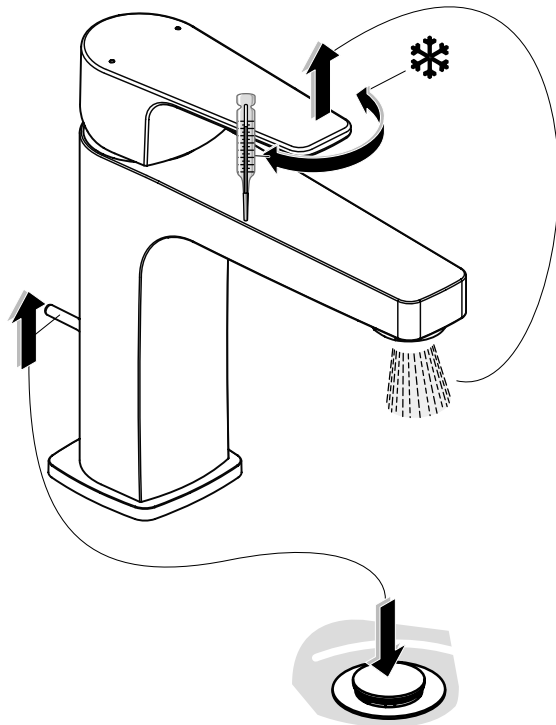
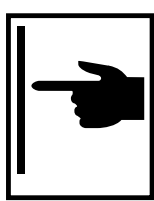
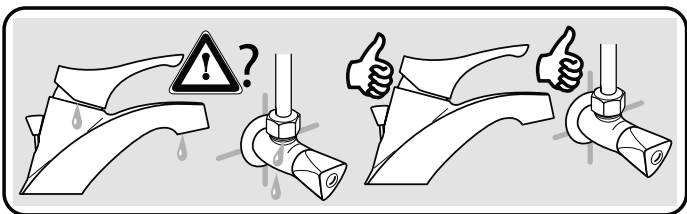
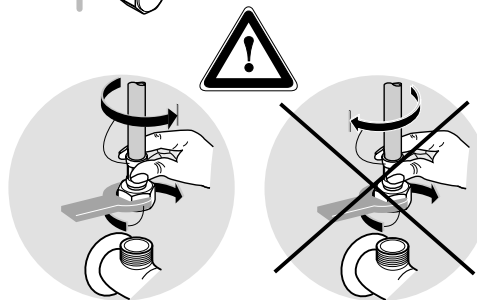
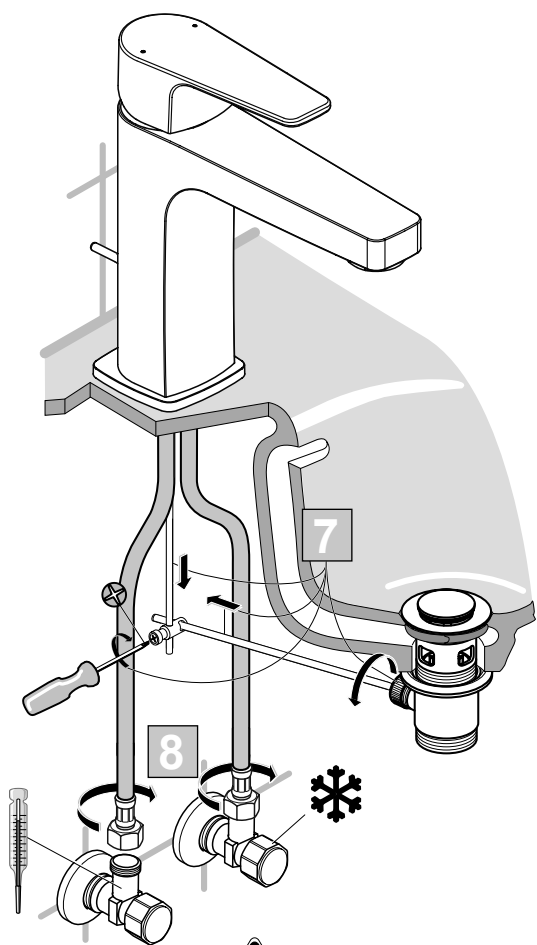
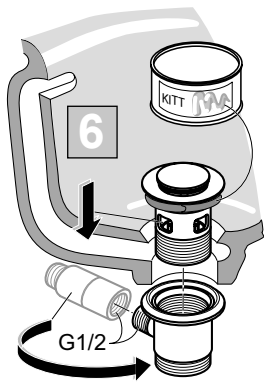
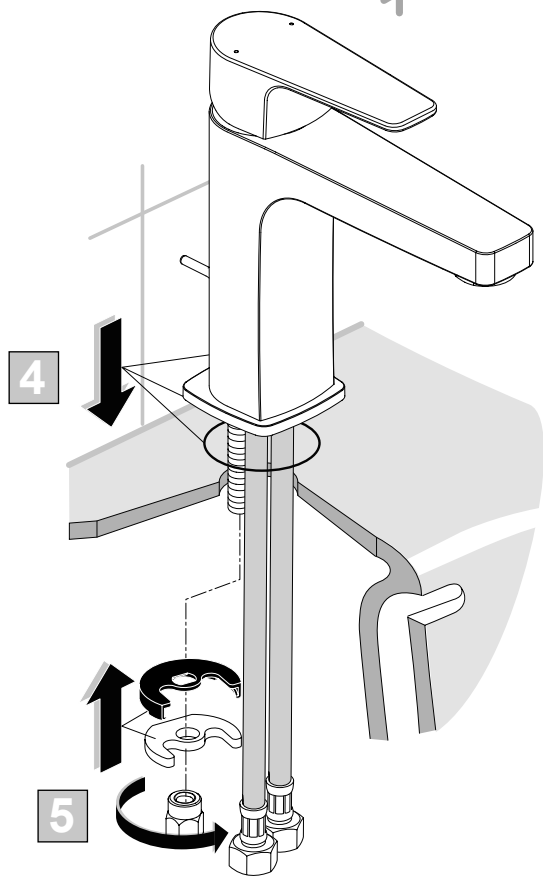
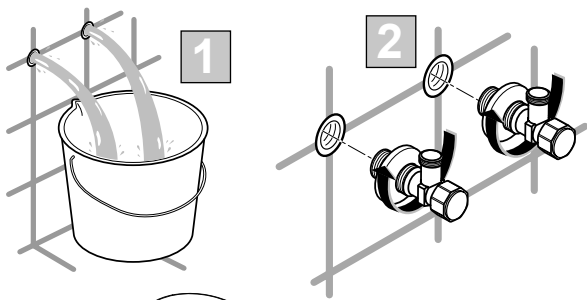
8 - B 964551 NU
9 - A 962991 XX
9a - B 964550 XX
10 - A 962005 NU
11 - B 960900 XX
12 - A 960019 XX
13 - A 963369 XX



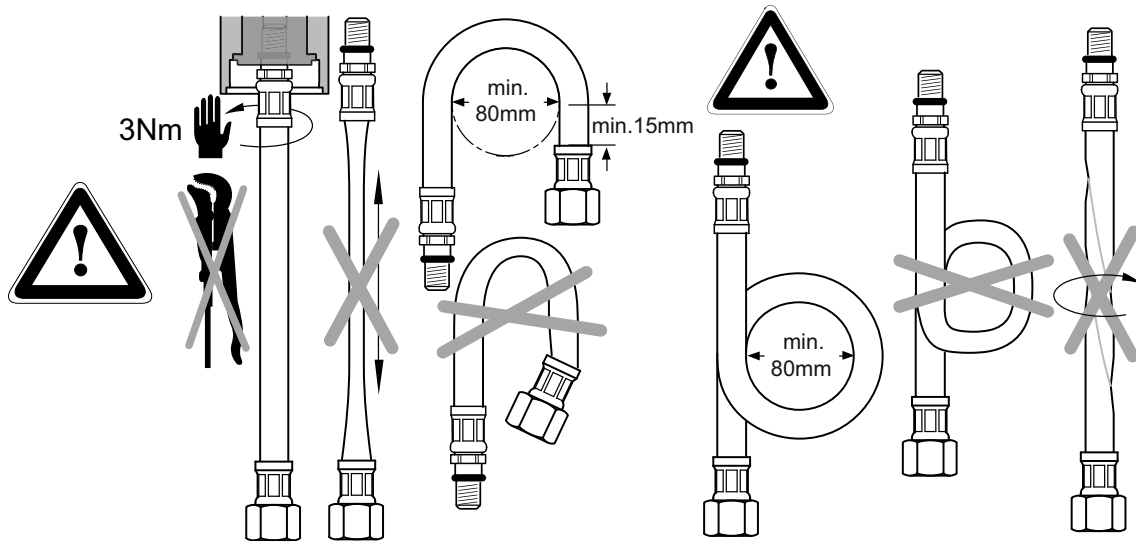
06.2022 / B665969



Ideal Standard International NV
Corporate Village – Gent Building
Da Vincilaan 2
1935 Zaventem
Belgium
<http://www.idealstandardinternational.com>



P	T	°C	°C	°C	°C	°C
0,3 MPa 3 bar	50°C	15°C	27	33	41	48
	65°C	15°C	33	42	53	63
	85°C	15°C	41	53	68	83



P	bar	0,5	MAX. 10	5	Q (3 bar)
T	°C	MAX. 80	65	40	l/min
					5